

Global Steps Academy Grace International (GSAGI)

English study-abroad program in CEBU



Offering you a
“24hrs English speaking environment”

3rd English speaking country in the world

Filipino is the official language of the country, however, English is widely spoken due to the many regional dialects throughout the country.

Education and Mass Medias

English education starts from Kindergarten. Mass Medias such as Movies, TV's, Radios, and Magazines are distributed in English.

Public Security

Over 2 million people are visiting Cebu every year since 2012 and the number is increasing year by year. Why visit Cebu if its dangerous?

Low cost of living (Example conversion to 2015/12 USD)

Taxi base fare: 80cents, 350ml Beer: 50cents, Fast food combo meal: \$1, 1H Shiatsu Massage: \$6

ALL MAN-TO-MAN LESSON

(Maximum of 192 hours of man-to-man lessons in 4 weeks!)

4Wks \$2910.00~

*Above rates are inclusive of: Lesson & Accommodation

(6Hrs MTM Lesson/Economy Room single Rm stay/made-to-order curriculums)

(Lesson hours and Room types can be met upon request)

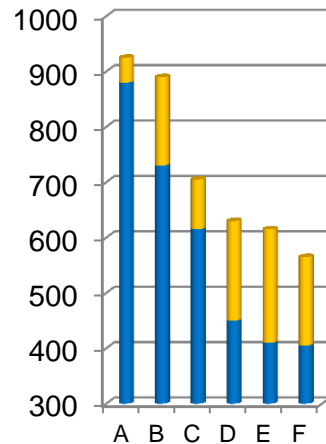


School building and its site includes Gym, Cafeteria, Bar, Convenience store, and is perfectly secure with 24hrs security service.

Quality of the Lesson

Region	Problem
Western English speaking regions	Group Lesson (Lack of conversation)
CEBU	Man-to-Man Lesson (Can put yourself in a situation where it is NECESSARY to talk)

TOEIC Mock test score improvements after taking 4 weeks of English lessons in the Phils.
 Average improvement: 150 points



English is a SECOND LANGUAGE for the Filipinos too!

Filipinos have their own Local Filipino language as their mother tongue. Therefore, Filipinos study English as a second language just like the people who are starting, or have started to study English. **They know the efficient way of achieving the language.** However, English education in the Philippines starts from Kindergarten and is widely spoken around the country, especially in the big cities. Teachers from “Middle class and above family” of GSAGI are fully certified and trained to provide you a high-quality English lessons.

Family and Growing Environment is also important when it comes to “Teaching”.

Knowing that “Hospitality and Level of English” is equivalent to one’s growing and learning environment, GSAGI keeps a very strict recruitment standards focusing on these standards.

Global Steps Academy Grace International (GSAGI)

English study-abroad program in CEBU

**If you are unsure of which school to choose from, Choose GSAGI!
Our Academic team has over 25 years of English education experience!**

Academy

<p>Global Steps Business Academy (For Corporate English Training)</p>	<p><i>“Made-to-order curriculums for each and every students’ needs”</i></p> <p><i>With an experience over a 100 corporate English training programs, our fully trained academic team will back up your employees by suggesting one’s made-to-order curriculums before arrival. If you are considering to enroll your employees to a different school, think again! We can provide you the same improvement in half the time.</i></p>
<p>Global Steps Medical Academy (For Nurses)</p>	<p><i>“Curriculums for Nurses”</i></p> <p><i>The curriculum of our Medical academy is made by one of our teachers with nurse license and is supervised by a Doctor from a famous clinic in Japan. GSAGI will provide you a “All Man-to-Man lesson” based on medical scene roll plays.</i></p>
<p>Global Steps English Academy (For Individuals)</p>	<p><i>“Allergic to English? Want to work abroad?”</i></p> <p><i>Each and every one of the learners have a different purpose of studying English. Tell us your needs and we can help you with a maximum of 192 hours of lessons in 4 weeks along with great living environments such as gym, restaurants, malls, bars, beaches and more!</i></p>

6 hours or 8 hours of MTM

**AM
Man-to-Man 3 hours**

+

**AM
Man-to-Man 3 or 5 hours**

Time table	
AM	1 st 9:00~9:50
	2 nd 10:00~10:50
	3 rd 11:00~11:50 (3 Lessons)
LUNCH	11:50~13:00
PM	4 th 13:00~13:50
	5 th 14:00~14:50
	6 th 15:00~15:50
	7 th 16:00~16:50
	8 th 17:00~17:50 (3 or 5 lessons)
*1 lesson/50minutes	

For Application and Inquiries



Grace International, Inc.

2-8-7 Dogenzaka Shibuya-ku Tokyo Japan
Zip 150-0043
www.grace-international.jp
info-gsagi@grace-international.jp
Tel +81-3-6757-3657

Contact: Koshiba or Tachibana
(Business Hours: 9:00~18:00/M~F)